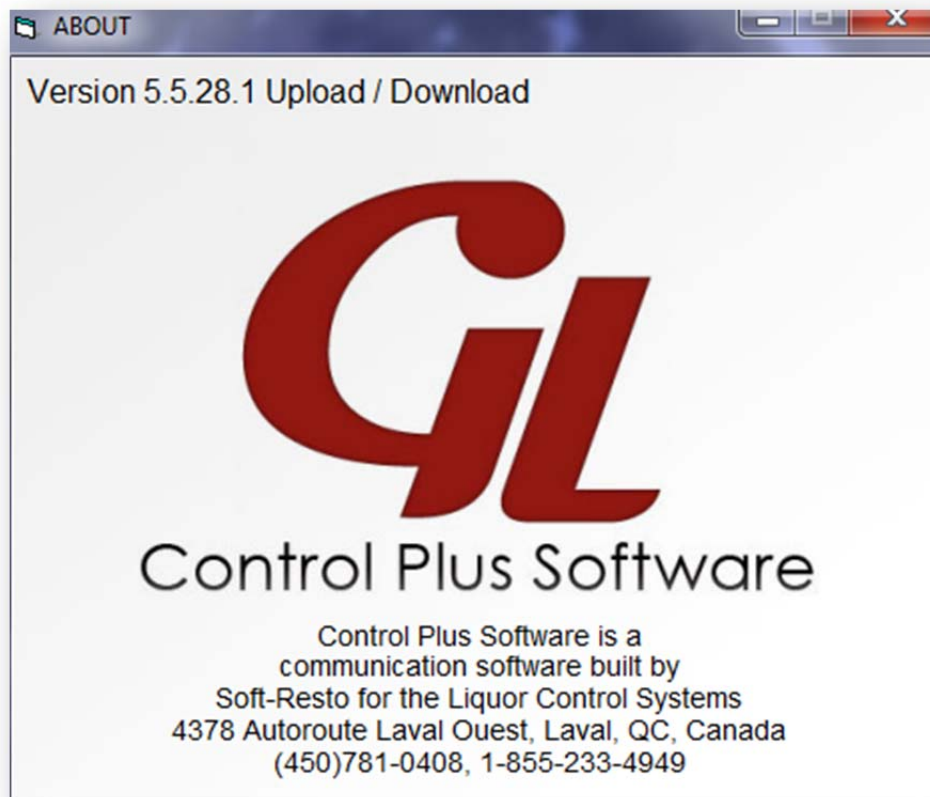


USERS MANUAL



SOFTWARE

INDEX

PREFACE	P3
INTRO	P4
SPECIFICATIONS	P4
INSTALLATION	P5-8
OPENING THE SOFTWARE	P9
OPTIONS	P10
MACHINE SETTINGS	11-15
EXPORT TO EXCEL	P15
IMPORT FROM EXCEL	P15
CABLE PIN-OUT	P16

PREFACE

Control Plus G.L. develops and manufactures high quality liquor control devices and draft beer monitors. Our company develops cost efficient solutions that are used around the world we have installations across North America, the Caribbean and in Europe.

Control Plus G.L. offers a complete bar control solution allowing the end user to precisely monitor soft drinks, liquor and wine. All our monitoring devices offer communication options that allow us to interface to cash registers, printers and point of sale systems.



HEAD OFFICE LOCATED
CONTROL PLUS G.L.
4378, AUTOROUTE 440 WEST
LAVAL (QC), H7T 2P7
450 781-0408
1 855 233-4949
WWW.CONTROLPLUSGL.COM

INTRO

CONTROL PLUS SOFTWARE

CONTROL PLUS SOFTWARE is a software program to efficiently program or makes changes in all our product line. This program allows the user to save existing customer settings and quickly make adjustments and or changes. This software is available in two versions. The base version (free) allows users to make + save changes. The complete version also allows visualising and print reports (EXCEL)

SPECIFICATION

For proper operation of your new program we recommend the following specification.

-Windows Xp / Vista / 7

-Celeron 1.8 and more

-512Mb Ram

-Vga 800*600 and more

-Serial Port V.1.1 - 2.0

-8bit Sound Card

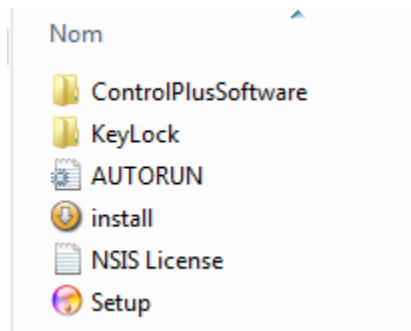
INSTALLATION

Download is available on our website www.controlplusgl.com/software.php

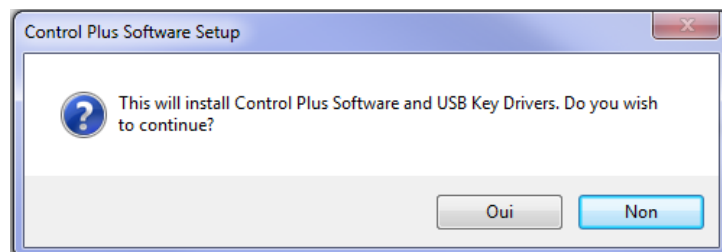
1- To install the software just click on the icon.



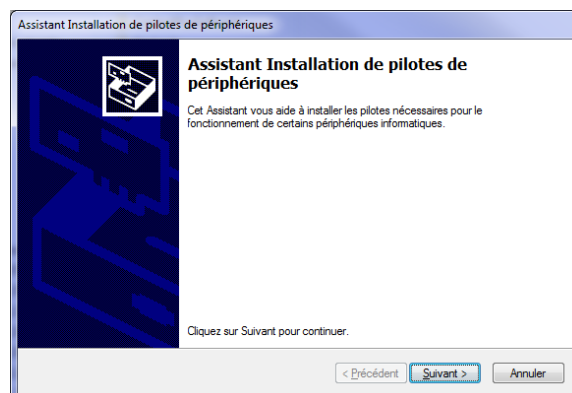
2- Then click setup.



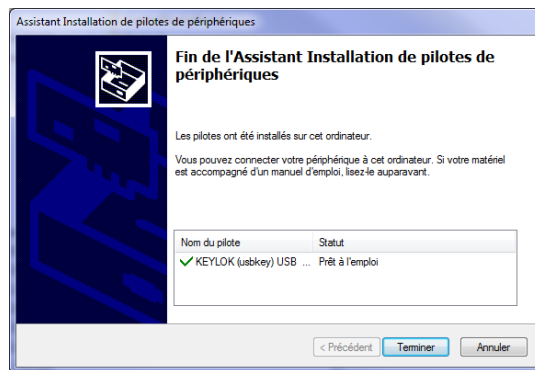
3- Click yes. In the drop box.



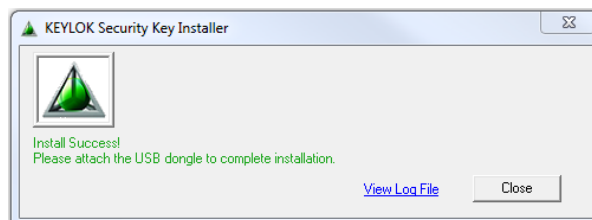
4- Then click next on the install drop box.



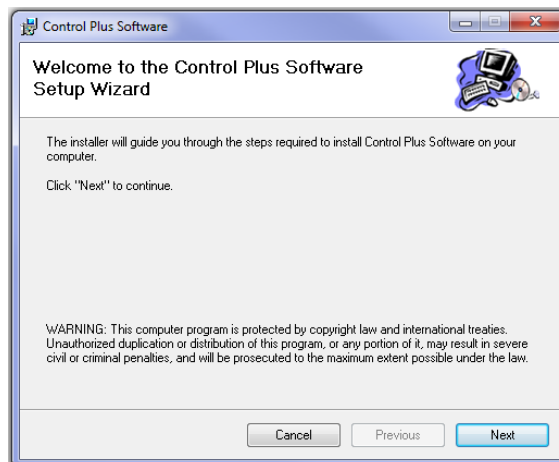
5- Press end to terminate install.



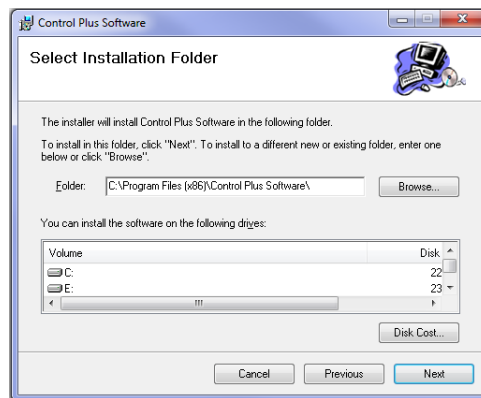
6- Click close and the software is installation now complete.



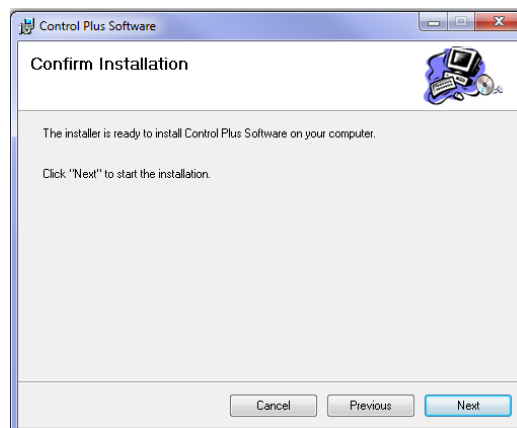
7- Click next to enter



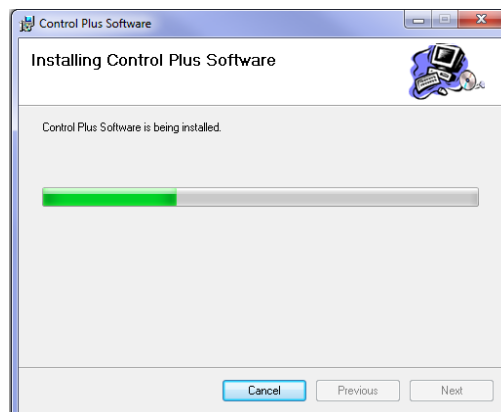
8- Choose the file and destination then click next.



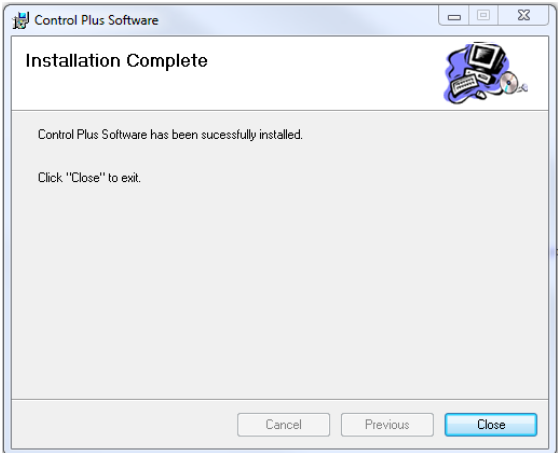
9- Click next to confirm the install.



10- Now watch the program load.



11- Click close we're done

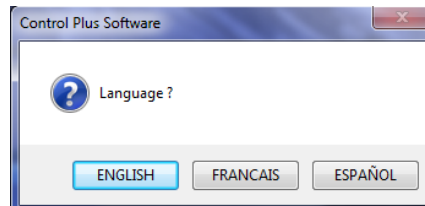


OPENING THE SOFTWARE

1- Click on the icon.



2- Chose language.



3- We are now ready to use.

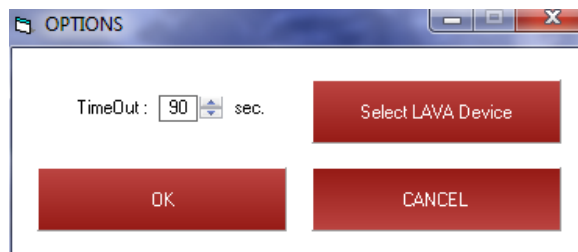


OPTION

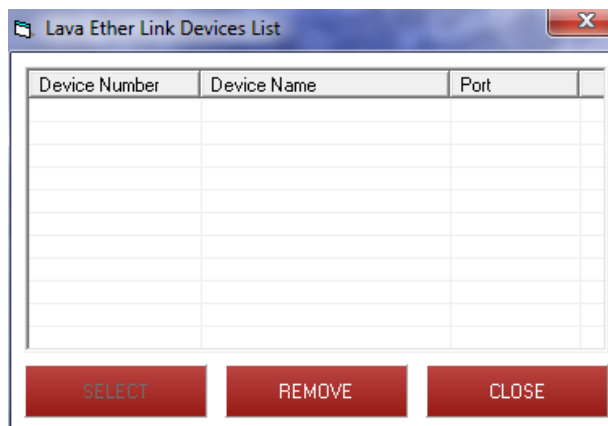
Click options.



This drop box will come up.



You can change the retry time out for communication using the arrows. You can also select LAVA (only if you have LAVA LINK RS-232 tied into the liquor device.) This would allow internet access with your device

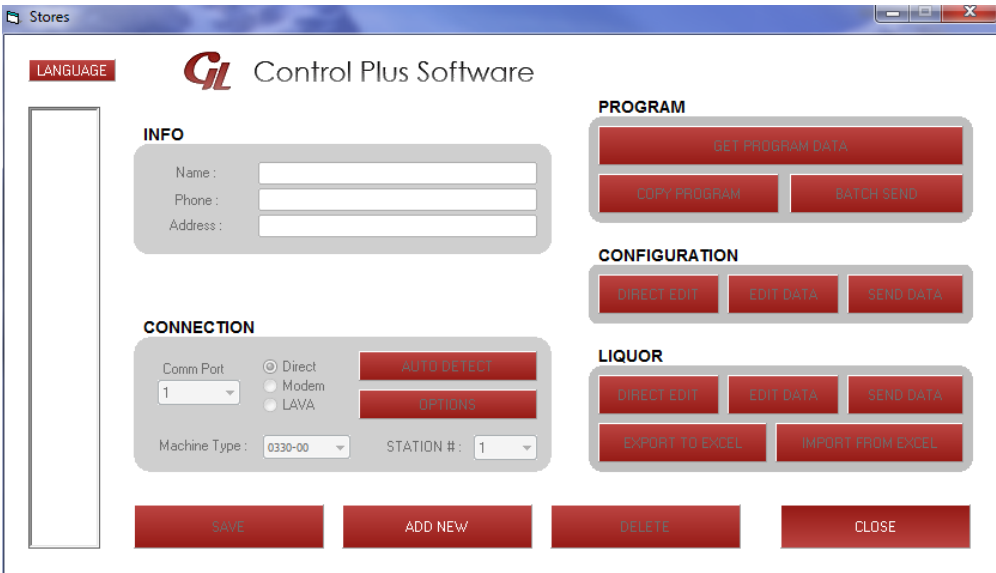


SYSTEMS SETTINGS

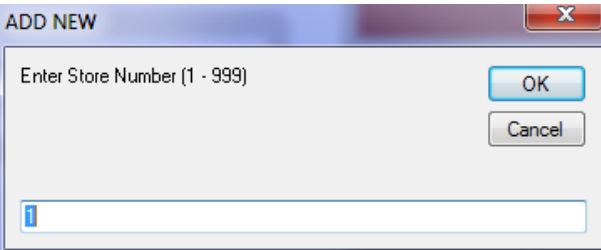
Click on SYSTEMS SETTINGS to communicate with your device.



Click on



Enter a store # and click OK.

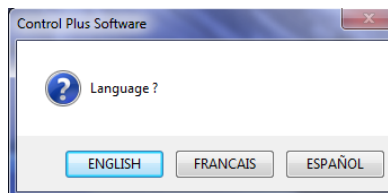


You have now created a store (bar).



Definision of sections

LANGUAGE : Language of choice



INFO : Identify customer.

INFO

Name :

Phone :

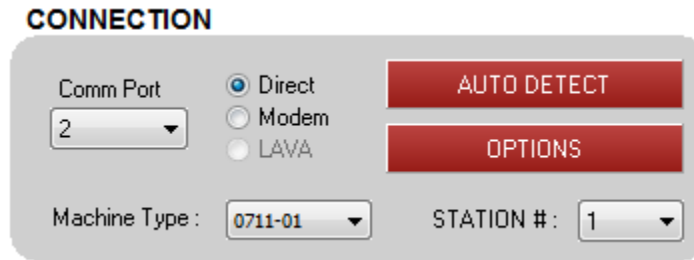
Address :

-Name : Customer Name

-Phone: customer phone # or modem phone #

-Address: customer address # or IP address # if you are using LAVA LINK

CONNECTION: This section is used to configure communication



The CONNECTION panel features a title bar 'CONNECTION' in bold. Below it, there are several controls: a 'Comm Port' dropdown menu with '2' selected; three radio buttons for 'Direct' (selected), 'Modem', and 'LAVA'; a red 'AUTO DETECT' button; a red 'OPTIONS' button; a 'Machine Type' dropdown menu with '0711-01' selected; and a 'STATION #' dropdown menu with '1' selected.

-Comm Port : chose or identifier communication port

-Directe/Modem/LAVA : Chose desired communication.

-Machine Type: Use to manually select device type.

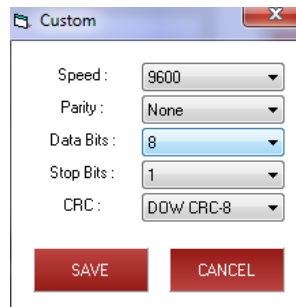
-# Station: Use to numerically identifier station.

AUTO DETECT

: Press auto detect to automatically using software .

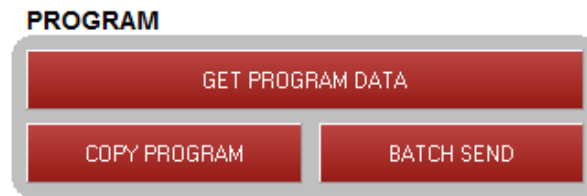
OPTIONS

: allows user to manually select baud rate/parity/data bits/stop bits/ CRC.



The Custom dialog box has a title bar 'Custom' with a close button. It contains five dropdown menus: 'Speed' (9600), 'Parity' (None), 'Data Bits' (8), 'Stop Bits' (1), and 'CRC' (DOW CRC-8). At the bottom, there are two red buttons: 'SAVE' and 'CANCEL'.

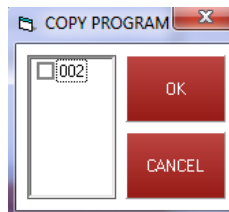
PROGRAMMES: This section is used to receive programming of your liquor device.



GET PROGRAM DATA : Click here to receive programming from your device.

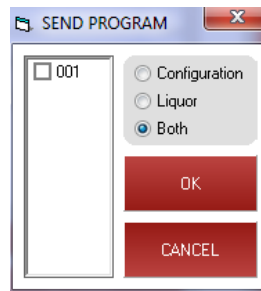
COPY PROGRAM : This is used to copy from one device to another.

(Select the store (bar) or stores that will receive data).



BATCH SEND : This is to send data to many stores at once.

(Select destination stores then click OK).



CONFIGURATION: This section used to modify the options in your device.



DIRECT EDIT :Used to directly make changes.

EDIT DATA : Used to make changes to the existing option in our PC.

SEND DATA : Used to send option changes from your PC to your device.

LIQUEURS : This is used to modify or creat liquor brands in your device.



DIRECT EDIT : Used to directly modify liquor in the device.

EDIT DATA : Used to modify liquor in your PC.

SEND DATA : Used to send option modifications from your software to the liquor device.

EXPORT TO EXCEL : Used to export liquor list onto Excel to modify them.

IMPORT FROM EXCEL : Used to import the changes made back into software from Excel.

EXEMPLE DE BASE EXCEL :

	A	B	C	D	E	F	G	H	I	J	K	L
1	0330-10											
2				Quantity	Quantity	Quantity	Quantity					
3	Liquor	Name	Grace Delay	Portion 1	Portion 2	Portion 3	Portion 4	Trash Level	SKU 1	SKU 2	SKU 3	SKU 4
4	1	GREY GOOS ORNG	0	33	50	100	150	D10D	00645225100007			
5	2	GREY GOOS CIT	0	33	50	100	150	8F84	00835229000308	08352249000506	00835229000605	
6	3	BCRDI DRAGON	0	33	50	100	150	F888	00835229001305			
7	4	ABSLT PEP	0	33	50	100	150	E602	00835229002302			
8	5	ABSOLUT	0	33	50	100	150	18C9	00057496090053	00057496090022	00057496090039	
9	6	AMARETTO	0	33	50	100	150	0751	00057496090114	00057496090107		
10	7	AMRTO DIS	0	33	50	100	150	4962	00084692204045			
11	8	APL PUCK	0	33	50	100	150	01ED	03394700013017			
12	9	APRICOT	0	33	50	100	150	11FE	00050037014501	00048415346276	08000353000292	
13	10	B & B	0	33	50	100	150	CE4F	06001495062980	06001495062669		
14	11	BCRDI	0	33	50	100	150	7674	00636191002402			
15	12	PATRON	0	33	50	100	150	0FD6	00621705110759	00621705111145	00621705111756	
16	13	BCRDI LMN	0	33	50	100	150	FAE5	00048415163071			
17	14	BCRDI O	0	33	50	100	150	8824	00659651050492	03147690083221	03359880400149	
18	15	BLVD VODKA	0	33	50	100	150	5030	00080480400637			
19	16	BLACKBERRY	0	33	50	100	150	865F	00080480980252			
20	17	MAKERS MK	0	33	50	100	150	A77F	00620213025401	00620213025104		
21	18	BUTTERSOT	0	33	50	100	150	AC14	00620213015402	00620213015105		
22	19	CC	0	33	50	100	150	C5CE	05011013100132	05011013100095	05011013100088	
23	20	CHAMBORD	0	33	50	100	150	7301	05011013504428			
24	21	CHIVAS	0	33	50	100	150	EAF9	05011013504411			
25	22	CIROC	0	33	50	100	150	36E6	05000329002216	05000329002353	05000329002414	
26	23	CHRSTN BROS	0	33	50	100	150	9488	00089540472539			
27	24	COURV VS	0	33	50	100	150	ED8B	00089540472553			

*** DON'T FORGET TO IMPORT BACK YOUR CHANGES OR THEY WILL NOT BE IN YOUR P.C.***

CABLE PIN OUT

PC		SYSTEME CONTROL	
<u>DB-9</u>			<u>DB-9</u>
DCD	1	1	DCD
RXD	2	2	RXD
TXD	3	3	TXD
DTR	4	4	DTR
GND	5	5	GND
DSR	6	6	DSR
RTS	7	7	RTS
CTS	8	8	CTS
VCC	9	9	VCC

